



SERIES G12 60 CELLS

# 280-300w



## KEY FEATURES



Bankable products



Top rank in Photon yield measurement



Safety for salt mist corrosion  
Safety for ammonia corrosion



Safety for fire risk  
(Class C tested in TÜV SÜD and Rheinland)



Outstanding power output capability at low irradiance



Triple 100% Electroluminescence (EL) tests minimize breakage rate



World 1st company to pass "Thresher Test" and "On-site Power Measurement Validation" certificate



Anti-PID products, passing TÜV SÜD system voltage durability test



Tested and certified according to newest IEC standard  
IEC61730-1:2016 IEC61215-1:2016  
IEC61730-2:2016 IEC61215-2:2016

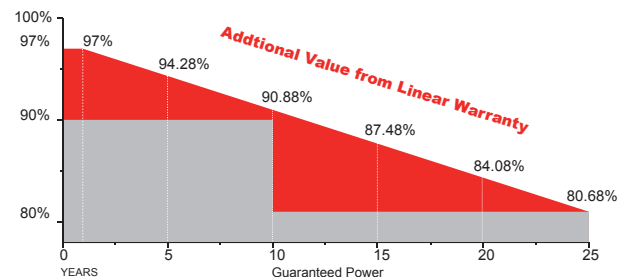
## INSURANCE



## PRODUCT CERTIFICATES



## WARRANTY



15 YEARS Guarantee on product material and workmanship



25 YEARS linear power output warranty

NABAI SOLAR

www.jsnbsolar.com  
Mob: +86-18761159253

czby86@czbyie.com

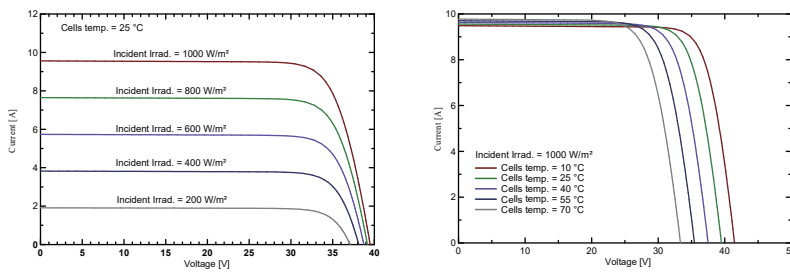


## Electrical Characteristics

Module Type	NB-60-280M	NB-60-285M	NB-60-290M	NB-60-295M	NB-3-600M
	STC	STC	STC	STC	STC
Maximum Power $-P_{mp}$ (W)	280	285	290	295	300
Open Circuit Voltage $-V_{oc}$ (V)	38.8	39.3	39.8	40.2	40.5
Short Circuit Current $-I_{sc}$ (A)	9.22	9.32	9.35	9.45	9.55
Maximum Power Voltage $-V_{mp}$ (V)	32.8	33.0	33.2	33.4	33.6
Maximum Power Current $-I_{mp}$ (A)	8.54	8.64	8.73	8.83	8.93
Module Efficiency STC- $\eta_m$ (%)	17.21	17.52	17.83	18.13	18.44
Power Tolerance (W)			(0,+4.99)		
Maximum System Voltage (V)			1000VDC		
Maximum Series Fuse Rating (A)			20A		
Pmax Temperature Coefficient			-0.38%/°C		
Voc Temperature Coefficient			-0.28 %/°C		
Isc Temperature Coefficient			+0.05 %/°C		
Operating Temperature			-40~+85 °C		
Nominal Operating Cell Temperature			45±2 °C		

STC: Irradiance 1000 W/m<sup>2</sup> module temperature 25°C AM=1.5NOCT: Irradiance 800 W/m<sup>2</sup> ambient temperature 20°C wind speed :1m/s Power measurement tolerance: +/-3%

## I-V Curve



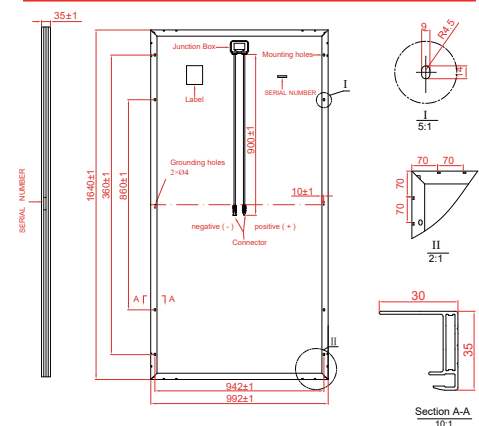
## Mechanical Specifications

External Dimension	1640 x 992 x 35mm
Weight	18.0kg
Solar Cells	G12 Mono crystalline 210*105 mm (60pcs)
Front Glass	3.2 mm AR coating tempered glass, low iron
Frame	Anodized aluminium alloy
Junction Box	IP68
Output Cables	4.0 mm <sup>2</sup> , cable length:900 mm
Connector	MC4 Compatible
Mechanical Load	5400 Pa

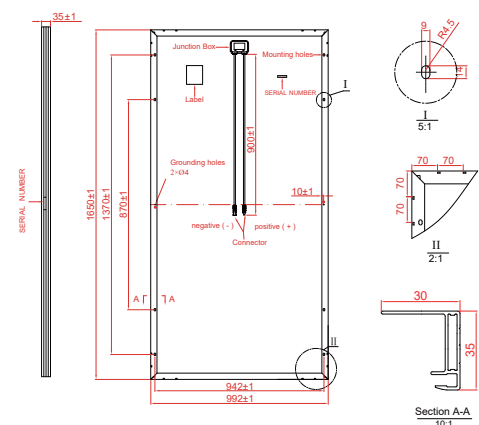
## Packing Configuration

External Dimension	1640 x 992 x 35mm		
Container	20'GP	40'GP	40'HQ
Pieces per Pallet	30	30	30+2*
Pallets per Container	12	28	28
Pieces per Container	360	840	896

## Technical drawing(NB-XXX-6MB)



## Technical drawing(NB-XXX-6MB)备选



\* All Dimensions in mm.

\* The above drawing is a graphical representation of the product. For engineering quality drawings please contact NABAI.